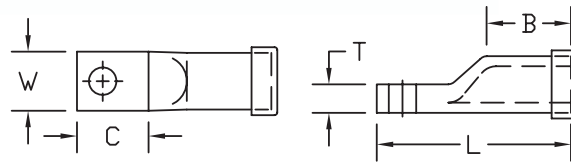
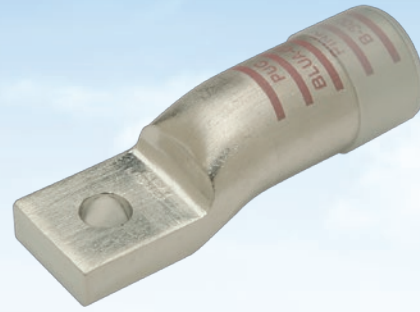


## Standard Barrel - One Hole Narrow Tongue Type BLUA-S-NT

- Manufactured from seamless aluminum tubing
- Tin-plated and factory prefilled with oxide inhibitor compound
- Beveled entry for easy cable insertion
- **Narrow tongue design for limited space applications**
- Color coding conforms to industry standards ensuring proper die selection and providing for a faster installation
- Connectors are marked with catalog number, wire size, die index and crimp locations
- Connectors are suitable for voltages up to 35 KV
- End caps provided to prevent foreign materials from entering and contaminating the connector prior to usage
- **Connectors are UL listed and CSA certified with Penn-Union, Burndy, T&B, Huskie and Greenlee tooling**



### BLUA-S-NT DIMENSIONS & INSTALLATION TOOLING INFORMATION

CATALOG NUMBER	ALUMINUM & COPPER CONDUCTOR SIZE	STUD HOLE SIZE	FIGURE DIMENSIONS (IN.)					COLOR CODE	INSTALLATION TOOLING																															
			TONGUE WIDTH "W"	TONGUE LENGTH "C"	TONGUE THICKNESS "T"	BARREL LENGTH "B"	OVERALL LENGTH "L"		PENN-UNION DIELESS MECHANICAL TOOLS	BURNDY DIE INDEX NO.	PENN-UNION DIE CATALOG NO.	WIRE STRIP LENGTH																												
BLUA-8S-NT	8 AWG	1/4"	.40	.62	.12	.56	1.56	Blue	TDM-250 or TDM-500	374	T-374	3/4"																												
BLUA-6S-NT	6 AWG	1/4"	.50	.80	.13	.69	1.83	Gray		346	T-346	7/8"																												
BLUA-4S3-NT	4 AWG	1/4"	.50	.80	.21	.87	1.89	Green		375	T-375	1"																												
BLUA-2S3-NT	2 AWG	1/4"	.55	.86	.27	.78	2.05	Pink		TDM-500	471	T-471	1-1/16"																											
BLUA-2S4-NT		5/16"	.55	.86	.27	.78	2.05																																	
BLUA-1S1-NT	1 AWG	1/4"	.55	.78	.23	.91	1.92	Gold						TDM-500	296	T-296	1-1/16"																							
BLUA-1S3-NT		5/16"	.55	.84	.23	.91	1.95																																	
BLUA-1/0S3-NT	1/0 AWG	5/16"	.64	.86	.30	.88	2.17	Tan										TDM-500	297	T-297	1-1/4"																			
BLUA-1/0S-NT		3/8"	.64	.86	.30	.88	2.17																																	
BLUA-2/0S5-NT	2/0 AWG	5/16"	.64	.84	.36	1.09	2.31	Olive														TDM-500	467	T-467	1-3/8"															
BLUA-2/0S1-NT		3/8"	.64	1.20	.36	1.09	2.62																																	
BLUA-3/0S5-NT	3/0 AWG	5/16"	.78	.84	.34	1.25	2.59	Ruby																		TDM-500	298	T-298	1-7/16"											
BLUA-3/0S2-NT		3/8"	.78	1.06	.34	1.25	2.81																																	
BLUA-4/0S3-NT	4/0 AWG	5/16"	.78	.84	.45	1.31	2.66	White																						TDM-500	324	T-324	1-9/16"							
BLUA-4/0S5-NT		3/8"	.78	1.20	.45	1.28	2.97																																	
BLUA-02S52-NT	250 kcmil	3/8"	.98	1.20	.42	1.41	3.11	Red																										TDM-500	470	T-470	1-5/8"			
BLUA-02S5-NT		1/2"	.98	1.53	.42	1.41	3.44																																	
BLUA-030S3-NT	300 kcmil	5/16"	.98	1.25	.51	1.06	2.44	Blue	TDM-500																													299	T-299	1-3/4"
BLUA-030S2-NT		3/8"	.98	1.25	.51	1.50	3.63																																	
BLUA-030S1-NT		1/2"	.98	1.56	.51	1.50	3.88																																	
BLUA-03S53-NT	350 kcmil	5/16"	1.00	1.25	.58	1.63	3.50	Brown		TDM-500	472	T-472	2"																											
BLUA-03S52-NT		3/8"	1.00	1.25	.58	1.63	3.50																																	
BLUA-03S51-NT		1/2"	1.00	1.55	.58	1.61	3.91																																	
BLUA-040S1-NT	400 kcmil	5/16"	1.20	1.25	.57	1.81	4.28	Green						TDM-500	300	T-300	2-1/16"																							
BLUA-040S4-NT		3/8"	1.20	1.25	.57	1.81	4.28																																	
BLUA-040S2-NT		1/2"	1.20	1.50	.57	1.81	4.53																																	
BLUA-050S1-NT	500 kcmil	3/8"	1.32	1.25	.54	1.88	4.06	Pink										TDM-500	473	T-473	2-1/8"																			
BLUA-050S2-NT		1/2"	1.32	1.50	.54	1.88	4.31																																	
BLUA-060S2-NT	600 kcmil	1/2"	1.31	2.03	.78	2.00	5.16	Black														TDM-500	301	T-301P	2-3/8"															
BLUA-060S-NT		5/8"	1.31	1.72	.78	2.00	4.84																																	
BLUA-07S54-NT	750 kcmil	1/2"	1.49	2.06	.63	2.25	5.25	Red																		TDM-500	301	T-301P	2-3/8"											
BLUA-07S51-NT		5/8"	1.49	2.19	.63	2.25	5.38																																	

- Connectors from 8 AWG - 1000 kcmil are UL listed per UL486A-B and CSA certified per C22.2 No.65 for POWER applications